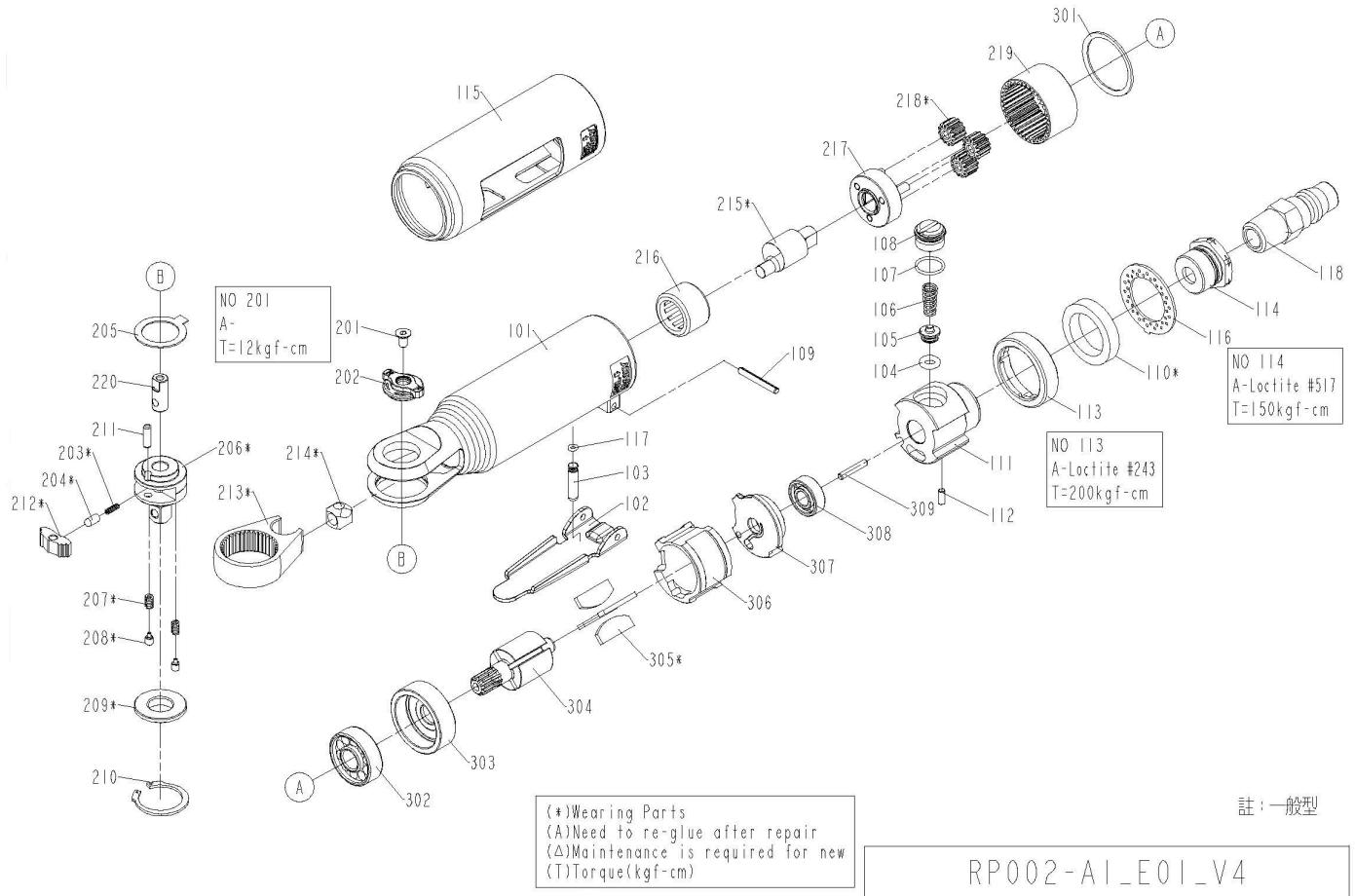


APT903 - Mini 1/4" Ratchet



RP002-A1_E01_V4

Ref	PCL Part No	Description	Qty
101	APS903/101	Housing	1
102	APS903/102	Trigger	1
103	APS903/103	Valve stem	1
104	APS903/104	O-ring	1
105	APS903/105	Discharge sheet	1
106	APS903/106	Discharge sheet spring	1
107	APS903/107	O-ring	1
108	APS903/108	Discharge valve seal	1
109	APS903/109	Spring pin	1
110	APS903/110	Muffler	1
111	APS903/111	Valve unit	1
112	APS903/112	Pin	1
113	APS903/113	Packing	1
114	APS903/114	Air inlet	1
115	APS903/115	Handle grip	1
116	APS903/116	Deflector	1
117	APS903/117	O-ring	1
201	APS903/201	Counter sunk screw	1
202	APS903/202	Reverse lever A	1
203	APS903/203	Reverse spring	1
204	APS903/204	Reverse pin	1
205	APS903/205	Yoke-washer	1
206	APS903/206	Anvil assembly	1

Ref	PCL Part No	Description	Qty
207	APS903/207	Thrust washer spring	2
208	APS903/208	Pin	2
209	APS903/209	Anvil-washer	1
210	APS903/210	In-concentric ring	1
211	APS903/211	Planet pin	1
212	APS903/212	Ratchet pawl	1
213	APS903/213	Yoke	1
214	APS903/214	Drive bushing	1
215	APS903/215	Motor shaft balancer	1
216	APS903/216	Needle bearing	1
217	APS903/217	Planet cage	1
218	APS903/218	Planet gear	3
219	APS903/219	Internal gear	1
220	APS903/220	Reverse gear	1
301	APS903/301	Spring-washer	1
302	APS903/302	Bearing	1
303	APS903/303	Front bearing plate	1
304	APS903/304	Rotor	1
305	APS903/305	Blades	4
306	APS903/306	Cylinder	1
307	APS903/307	Rear end plate	1
308	APS903/308	Bearing	1
309	APS903/309	Spring pin	1