

- Twistlok action
- Wide choice of adaptors
- Non whip adaptors
- Rugged design



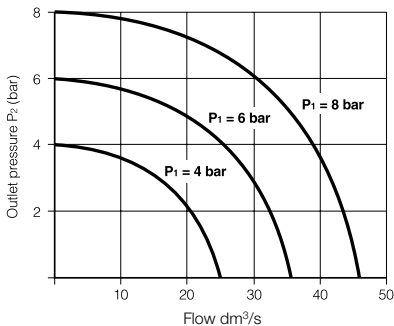
Twistlok Units

Designed for single hand connection or disconnection. A twist on the cap will release the adaptor and the airline is automatically resealed. When coupled the check unit allows the adaptors to swivel, to eliminate kinking of the hose.

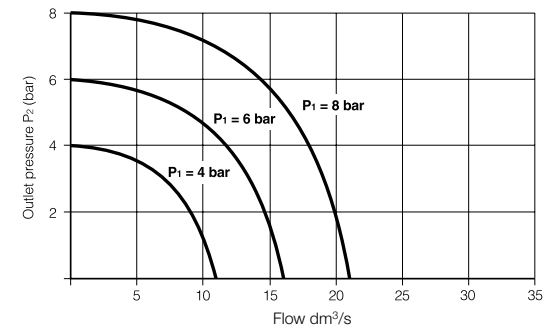
Operating and additional information			Materials	
Pressure range	Standard Partial vacuum to 17 bar	Heavy Duty Partial vacuum to 17 bar	Body	Aluminium
Temperature range	-10°C to +80°C	-10°C to +80°C	Washer holder	Brass chrome plated
Fluids	Air	Air	Spring	Stainless steel
Q max	23.6 dm ³ /s	51.9 dm ³ /s	Deflector	Brass
Cv	1.07	1.9	Sleeve	Steel zinc plated
			Seals	Nitrile (viton on request)
			Adaptors	Plated mild steel

Flow Rates

Pressure vs Flow
Schrader Standard 1/4 Female Coupling



Pressure vs Flow
Schrader Heavy Duty 1/2 Female Coupling



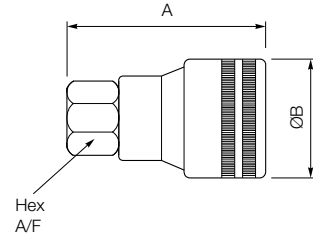
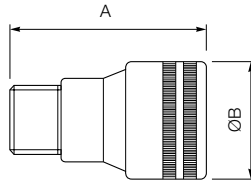
Twistlok Standard Check Units



Profile



Symbol



Order Code	Pack Qty	Connection	Weight (g)	Dimensions (mm)		
				A	ØB	Hex A/F
8952DL-12	1	G1/4 Female (BSPP)	120	45	30	17,5
9793D-12	1	R1/4 Male (BSPT)	132	55	30	18,0
9792D-12	1	R3/8 Male (BSPT)	138	55	30	18,0

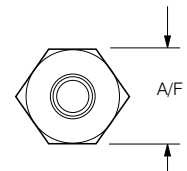
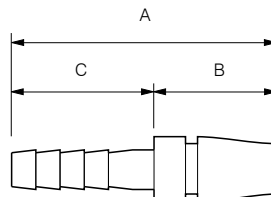
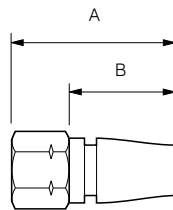
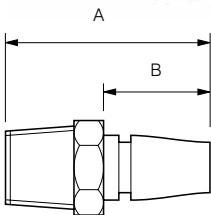
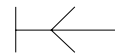
Standard Adaptors



Profile



Symbol

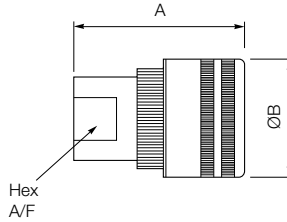


Order Code	Pack Qty	Connection	Weight (g)	Dimensions (mm)			
				A	B	C	Hex A/F
8051B-11	1	R1/8 Male (BSPT)	15	42	24,5	-	14,0
8050B-11	1	R1/4 Male (BSPT)	20	44	24,5	-	14,0
2047B	1	G1/8 Female (BSPP)	26	42	24,5	-	14,0
8278L-11	1	G1/4 Female (BSPP)	34	46	31,0	-	17,5
8787-11	1	1/4" (6mm)	Hose Tail	57	30,0	27	14,0
9750-11	1	5/16" (8mm)	Hose Tail	57	30,0	27	14,0
8788-11	1	3/8" (10mm)	Hose Tail	57	30,0	27	14,0
9031	1	G1/4 Female Non-whip (BSPP)	48	55	31,0	-	17,5

**Twistlok Heavy Duty
Check Units**

Profile

Symbol

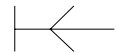
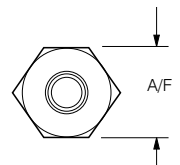
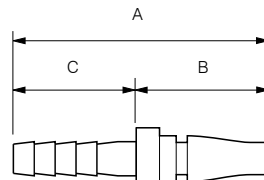
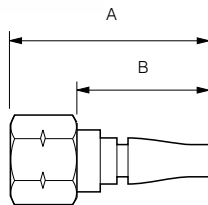
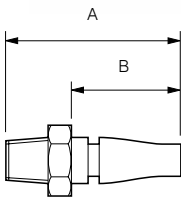


Order Code	Pack Qty	Connection	Weight (g)	Dimensions (mm)		
				A	ØB	Hex A/F
1054EL-12	1	G1/4 Female (BSPP)	168	58	37	17,5
1095EL-12	1	G3/8 Female (BSPP)	160	58	38	24,0
1461EL-12	1	G1/2 Female (BSPP)	180	58	37	25,5
1462EL-12	1	G3/4 Female (BSPP)	220	63	37	33,0

Heavy Duty Adaptors

Profile

Symbol



Order Code	Pack Qty	Connection	Weight (g)	Dimensions (mm)			
				A	B	C	Hex A/F
8624B-11	1	R1/4 Male (BSPT)	44	48,0	28	-	17,5
9739-11	1	R3/8 Male (BSPT)	60	48,0	28	-	22,0
8807-11	1	R1/2 Male (BSPT)	86	54,0	28	-	22,0
1462B-11	1	G3/4 Male (BSPP)	102	55,0	28	-	27,0
1261L-11	1	G1/4 Female (6mm) (BSPP)	44	43,0	28	-	17,5
1096B-11	1	G3/8 Female (8mm) (BSPP)	64	47,0	28	-	22,0
1097-11	1	3/8" (10mm) Hose Tail	46	71,0	33	38	-
1098-11	1	1/2" (12mm) Hose Tail	64	71,0	33	38	-
9042	1	G3/8 Female Non-whip (BSPP)	90	57,5	28	-	22,0